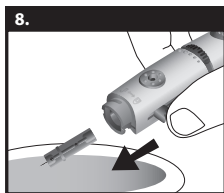
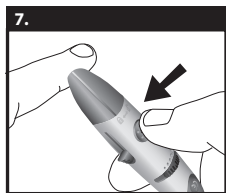
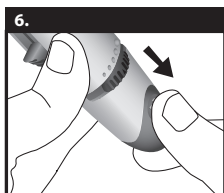
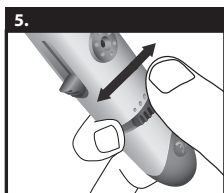
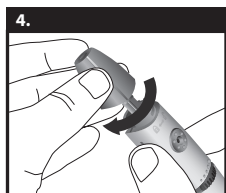
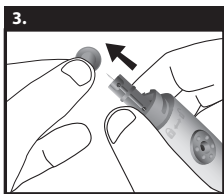
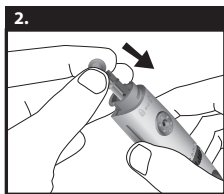
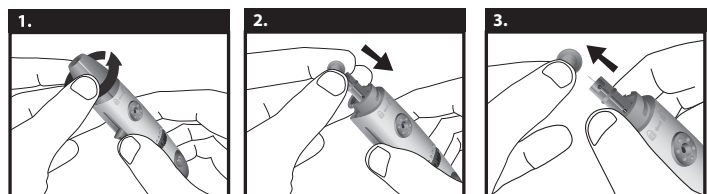
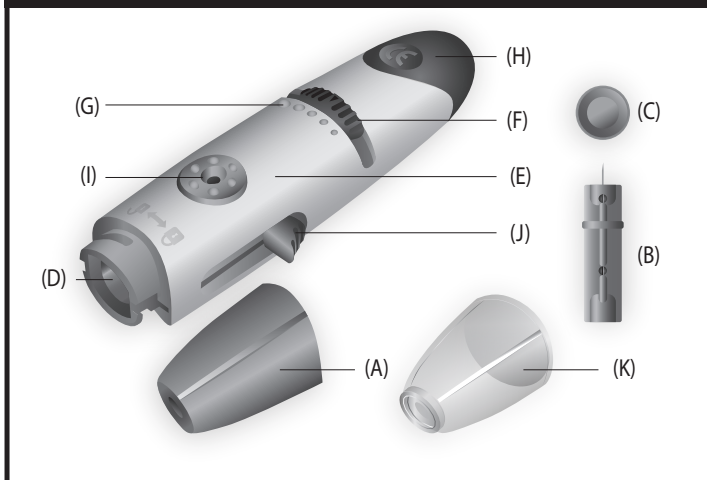
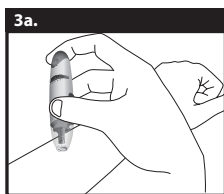
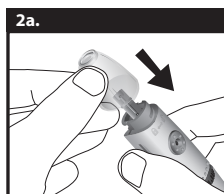
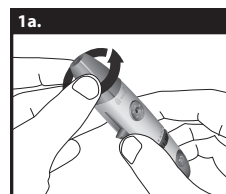


stat®

TRIO Lancing Device & AST Cap



TRIO Alternative Site Test (AST) Cap



ENGLISH

The STAT® Trio Lancing Device and optional Alternative Site Test Cap are used to obtain capillary blood samples for home blood glucose testing.

Blood sampling from a finger:

Wash test site with soap and warm water then dry completely. Then prep test site with a 70% v/v Isopropyl Alcohol prep pad. Before lancing, hang your arm down and gently rub the hand from the wrist to the base of the finger. This will help to get better blood flow and allow a good blood drop to form. Select a site on an outer edge of the finger for the best blood drop and the least bother. Avoid squeezing your finger after lancing.

WARNING:

- Single Patient Use Only.
- Do NOT share your lancing device with anyone, not even family members.
- Sharing your lancing device may cause the spread of infections or diseases to YOU and other persons.
- Not to be used for assisted blood draws by healthcare providers or at healthcare provision sites.*
- Use a NEW sterile lancet each time you test.
- Clean your device after each use. See cleaning and disinfection instructions below.
- Do NOT use if device and / or lancet appears damaged.
- Do NOT use lancets that do not fit properly in the lancet holder.
- Do NOT use lancet, if after insertion into the device the needle is protruding through the end cap.
- Failure to use the device properly may result in inaccurate reading or error code on meter.

*Any setting where finger stick procedures are performed, including assisted living or residential care facilities, hospitals, skilled nursing facilities, clinics, health fairs, shelters, detention facilities, senior centers, schools and camps, etc.

INSTRUCTIONS:

1. Remove the end cap (A) by twisting the cap counter-clockwise while holding the body of the STAT Trio device face-forward (E). Use only lancets that fit properly in the lancet holder.
2. Insert a lancet body/cap (B/C) firmly into the lancet holder (D) until it comes to a stop (lancets sold separately).
3. Remove the protective lancet cover (C) by holding the STAT Trio device body (E) and the lancet (B) firmly with one hand. Twist/pull off the lancet cover (C) in a straight direction with the other hand to avoid bending the lancet tip. **WARNING: Do not touch the lancet tip. Sterility of lancet is maintained until cap is removed.**
4. Replace the end cap (A) by twisting it clockwise onto the STAT Trio device body (E). Ensure end cap (A) is securely locked in place; otherwise the device may not function as intended.
5. Select the skin penetration depth by sliding the depth selector (F) to the desired depth (G). The STAT Trio offers 5 levels of depth settings indicated by 5 dots with the smallest dot (lowest setting) on the left progressing to the largest dot (highest setting) on the right: first dot for soft skin; second or third dot for average skin; and fourth or fifth dot for thick or calloused skin.
6. Pull back on the STAT Trio arming mechanism (H) located at the back of the device until it comes to a stop. The arming mechanism will return to its original position upon release. If not, device may not function as intended. The armed indicator located in the center of the release button (I) will appear red when the STAT Trio is ready-to-use for blood sampling.
7. Place the STAT Trio firmly against the finger and press the release button (I) to obtain a blood sample. The lancet will return to a retracted position after use.
8. After finishing your blood test, remove the STAT Trio end cap (A) and use the lancet ejector (J) to eject the lancet (B) safely into an appropriate sharps container.

STAT Trio Alternative Site Test (AST) Cap

Obtaining a blood drop from an alternative blood sampling site.

Refer to your test strip instructions, manual or glucose meter manufacturer for appropriate locations and conditions for blood glucose testing at alternative sites other than the fingers.

IMPORTANT: Consult your healthcare professional and glucose meter manual before you sample from an alternative site.

INSTRUCTIONS:

- 1a. Remove the standard end cap (A) by twisting the cap counter-clockwise while holding the body of the STAT Trio device face-forward (E).
- 2a. Prepare the lancing device for blood sampling, as directed in the above instructions (steps 2-4) and replace standard end cap (A) with the clear Alternative Site Test Cap (K)
- 3a. Rub site to be sampled until it is warm. This will bring the blood to the surface of the skin. Hold the lancing device to the surface of the skin area to be sampled. Depress the release button to lance the skin. Do not remove the lancing device. Apply steady, even pressure to the lancing device until an adequate sample of blood is viewed through the Alternative Site Test Cap. Carefully remove the lancing device and sample the blood drop with your meter and test strip. Finish by following above instruction (step 8).

CLEANING & DISINFECTION:

Cleaning and disinfection are different and both should be performed. Cleaning is part of your normal care and maintenance and should be performed prior to disinfection, but cleaning does not kill germs. Disinfection is the only way to reduce your exposure to disease.

Cleaning your lancing device and cap(s)

The lancing device and cap should be cleaned when they are visibly dirty or show signs of blood and before disinfection. Clean your lancing device and cap at least once per week. For cleaning obtain regular strength liquid dish soap and a soft cloth. Prepare a mild detergent solution by stirring (½ teaspoon / 2.5 mL) of regular strength liquid dish soap into (1 cup / 250 mL) of water.

- Do Not use alcohol or any other solvent.
- Do Not immerse the lancing device in any liquid.

1. Use a soft cloth dampened with water and mild detergent to wipe the outside of the lancing device, and wipe the outside of the cap.
2. Wipe dry with a clean, soft cloth.

Disinfecting your lancing device and cap(s)

Always use protective gloves, goggles and proceed with the disinfection process in a well ventilated area. The lancing device and cap should be disinfected periodically. Clean your lancing device and cap prior to disinfecting. For disinfecting, obtain regular household bleach* (containing a minimum of 5.5% sodium hypochlorite as the active ingredient). Prepare a solution of 1 part household bleach and 9 parts water.

*Follow manufacturer's instruction for handling and storage of bleach.

